

 興勝創建控股有限公司  
HANISON CONSTRUCTION HOLDINGS LIMITED

興勝建築有限公司  
HANISON CONSTRUCTION COMPANY LIMITED

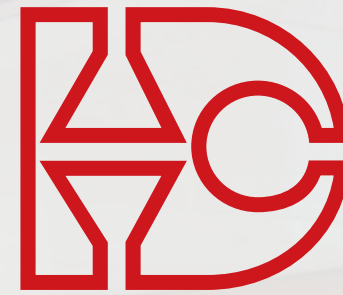
興勝營造有限公司  
HANISON CONTRACTORS LIMITED

興勝室內及維修有限公司  
HANISON INTERIOR & RENOVATION LIMITED

華高達建材有限公司  
TRIGON BUILDING MATERIALS LIMITED

香港沙田源順圍5-7號沙田工業中心B座4樓1室  
Unit 1, 4/F., B1k B, Shatin Industrial Centre,  
5-7 Yuen Shun Circuit, Shatin, N.T, Hong Kong

電話 / Tel : (852) 2414 3889  
傳真 / Fax : (852) 2415 2080 / 2498 9045  
電郵 / Email : general@hanison.com  
網址 / Web-site : www.hanison.com.hk



**TRIGON** Building Materials Limited

華高達 建材有限公司

KITCHEN CABINET 廚櫃 / BATHROOM CABINET 浴室 / FALSE CEILING 天花吊頂 /  
METAL CLADDING 金屬幕牆 / LOUVRES 金屬百葉 / TIMBER FLOORING 木質地板



quality selection ... ..  
精心挑選 · 細意品嚐  
QUALITY SENSATION

 華高達建材有限公司  
TRIGON BUILDING MATERIALS LIMITED  
A member of Hanison Construction Holdings Limited



**quality selection ... ..**

精心挑選 · 細意品嚐

**QUALITY SENSATION**





東涌藍天海岸會所  
Clubhouse at Coastal Skyline, Tung Chung



# 目錄

## Contents

### 3 公司簡介 Company Profile

- 4 引言 Introduction
- 5 歷史及發展 History & Development
- 7 公司目標 Corporate Objective
- 7 公司策略和架構 Corporate Strategies & Structure
- 7 財政方面 Financial Aspect
- 9 競爭優勢 Competitive Advantages
- 9 技術方面 Technology
- 10 管理和營運方面 Management & Operational Control
- 10 品質方面 Quality Control
- 11 環境保護 Environmental Issues
- 11 安全方面 Safety Issues

### 12 集團架構 Corporate Structure

### 14 產品精選 Product Highlights

- 16 廚櫃及浴室櫃  
Kitchen and Bathroom Cabinet
- 24 假天花、金屬幕牆板及百葉  
False Ceilings, Metal Cladding and Louvre
- 36 木地板及複合地板  
Timber Flooring and Engineering Flooring
- 40 百利板  
Polyboard



公司簡介  
Company Profile



# 公司簡介

## COMPANY PROFILE



► **The Portofino,**  
Clear Water Bay  
清水灣·柏濤灣

Kitchen Cabinet

### 引言 Introduction

華高達建材有限公司於一九九七年開業，附屬於興勝控股有限公司—於二零零一年一月正式在香港聯合交易所上市的有限公司（股票編號：896）。本公司旨在提供及承造各類優質建材，包括廚櫃、浴櫃、假天花吊頂、金屬幕牆板及百葉、木地板、以及環保建材百利板等。

**Trigon Building Materials Limited** commenced business in 1997 and is a wholly-owned subsidiary of Hanison Construction Holdings Limited, a Hong Kong listed company (stock code: 896). We provide quality building materials as well as contracting services including kitchen and bathroom cabinet, false ceiling, metal cladding and louvres, timber flooring, and environmental friendly products such as Polyboard.

在過去，本公司曾承擔並成功地完成各項工程，其中包括各大發展商的私人屋苑、政府機構、辦公室大樓、購物商場，主題公園甚至大專院校的教學大樓等。

In the past years, our company had undertaken and successfully completed many projects, including the residential properties of various developers, government properties, office premises, shopping arcades, theme park and institutional complex.

本公司擁有大量的專業人員，包括資深設計師、工程經理、工人，負責設計、統籌、管理和監督由施工至完成各項工程的部份，務求讓客戶稱心滿意，並彼此建立穩固的合作關係。所參予過的項目簡單至供應物料，以至給予客戶技術支援或設計分析不等。

Our company employs qualified professionals, experienced designers, contract managers, and foremen to design, manage and supervise the project work to the full satisfaction of our clients. Our scope of works range from material supply, to technical support and provide design idea to clients.

華高達建材有限公司在技術與財政上都獲得興勝集團的全力支持，對未來的開創發展充滿信心。

**Trigon Building Materials Limited** obtains full technical and financial support from its holding company and fellow companies, it has every confidence to take on new challenges within this profession for the years to come.



▲ **Bel-Air on the Peak,** Cyberport  
數碼港·貝沙灣

False Ceiling

### 歷史及發展 History & Development

本集團於一九八九年成立，主要從事建築業務，並涉及香港之商業、工業、康樂及住宅等項目。

The Group was established in 1989 to engage principally in the construction business involving mainly construction works in commercial, industrial, recreational and residential projects in Hong Kong.

本集團於一九九零年進行首項工程，在愉景灣興建一幢8層高的商用及住宅綜合大樓。此後，本集團陸續參與愉景灣往後的發展。同年，本集團亦獲批另一項項目工程，於葵涌興建六座17層高的寓所。

The Group undertook its first construction project in 1990 for the building of an 8-storey commercial and residential complex in Discovery Bay. Since then, the Group has participated in subsequent phases of the development of the Discovery Bay. In the same year, the Group was also awarded another construction project for the construction of six blocks of 17-storey apartments in Kwai Chung.

▼ **Harbourview Horizon,** Hung Hom Bay  
紅磡灣·海韻軒



Kitchen Cabinet





Kitchen Cabinet

於一九九五年，興勝建築榮獲品質保證局頒發ISO9002之認證，以嘉許其努力及其致力於維持旗下建築工程的質素。於一九九六年，興勝建築獲參加入房委會之樓宇承建商之認可名冊。興勝建築亦於一九九七年榮獲房協批准參與競投建築合約。這項合約使本集團有機會將其業務擴展至公營機構。

In 1995, Hanison Construction was awarded the ISO9002 certification from HKQAA in recognition of its efforts and commitment towards the maintenance of quality in its construction works. In 1996, Hanison Construction was admitted onto the approved list of building contractors of the Housing Authority. Hanison construction was also approved by the Housing Society as a contractor for building contracts in 1997. This provided the Group with opportunities to extend its business to the public sector.

### 公司目標 Corporate Objective

透過積極進取的思考、富有創造性的意念和勇於創新的潛能，讓業務趨向穩健發展，使客戶獲得滿意的成果。

To develop our business steadily through positive thinking, creativity & innovative capabilities in order to gain our customer's satisfaction.

### 公司策略和架構 Corporate Strategies & Structure

- ① 以優質的工程和良好的服務態度，來建立公司的前景。  
To establish company's prosperity by high quality performances as well as services.
- ② 為各大發展商、建築師、工程顧問積極引進世界各地優質，創新及環保產品供以提高樓宇質素。  
To introduce quality, innovative and environmental friendly products for developer, architect and building consultant to improve the quality of their premises.
- ③ 藉著員工訓練、聘用資深及富經驗的員工，以持續改善施工質素、設計技巧和工藝水平。  
To continuously improve our quality, design skill and workmanship by staff training, and by employing well qualified and capable staff.
- ④ 透過商業伙伴與發展商的引薦與推介，建立更大的客戶網絡。  
To secure more clients through introduction and recommendation by our existing business partners and clients.

### 財政方面 Financial Aspect

本公司一直能夠維持良好的營運增長。在集團的支持下，本公司絕無資金週轉的問題出現。The company has managed to maintain a healthy growth in turnover. Owing to support from its holding company, the company has no problem with its liquidity situation.





Metal Louvres

◀ No. 8 Clear Water Bay Road  
清水灣 8 號

## 競爭優勢 Competitive Advantages

綜合以上各點，本公司在集團的全力支持下，不論在技術和財政上，都絕對能應付各項大小不同的工程，無懼出現任何技術和財政問題。

As mentioned above, with very strong financial and technical supports from its holding company, our company can undertake sizeable projects without any technical or financial concerns.

由於集團之內附屬有其他與建築業有關的物料供應商，以及不同類型的工程承造商，本公司能尋求各類型新產品，新技術和爭取更具競爭力的成本價格。

Within the Hanison Group, there are other subsidiaries specializing in the supply of interior products and contract works. The company can get assistance from these fellow companies to acquire innovative and good building materials and skills at competitive prices.

管理階層經驗豐富，且克盡厥職。

The management and technical team of the company is well qualified and experienced in this field of business.

## 技術方面 Technology

本公司致力為僱員提供培訓，以培育其技巧與專業知識，並努力不懈地尋找既新且具成本效益的建築技術及材料，適當地用於各項目上。

The company constantly sends its staff for training to keep abreast of the latest technological developments in this field of business.

利用電腦與各式軟件，以配合工程和設計客戶所需要的圖樣。

The company uses computers, and computer software for drawing and designing project plans.

本公司一直購置各種更新改良的物料和機械去提升項目的質量和工藝標準。

The company purchases new and improved materials and tools in order to enhance the quality and workmanship of our projects.

除施工外，本公司可承接設計與建造合同，與各大小不同顧問維持良好的客戶關係，共同提供專業設計意見，並一直留意政府部門所頒佈的樓宇條例和辦理牌照事宜。

We have good relationship with different consultants to obtain their professional opinions in our design process. We shall pay attention to all latest building regulation and ordinance so as to comply with licensing requirements.





Kitchen Cabinet



Kitchen Cabinet

▲ Rambler Crest, Tsing Yi  
青衣·藍澄灣

## 管理和營運方面 Management & Operational Control

本公司管理階層定期與工程人員開會檢討進度及財務管理。

The company holds monthly management meetings to review site progress and financial management.

每個項目皆定期舉行現場會議，與各方面檢討進度，包括業主代表、顧問公司、分包商和行業管工。

Site meetings with clients and subcontractors, and internal coordination meetings will be held regularly, to ensure that projects are progressing as scheduled, and that the quality of work is up to standard.

## 品質方面 Quality Control

本公司為求積極推行優質服務，因此，各項目負責的合約經理和管工均對所屬之工程有嚴謹的監察，以使品質達至所期望的水準，客戶則稱心滿意。

The company always strives for excellence in the production of work. Therefore, the contract manager and the foreman will be scrutinizing project work closely, and contacting the clients regularly, in order to ensure that the quality of our work is up to the customers' expectations.

開工前，各樣物料必經過嚴謹細緻的挑選，及經客戶預先審批。

All of the materials used are carefully selected, and obtain the approval from our customers, before commencement of works.

在挑選分包商的過程中，本公司亦重視該公司的工作表現及水平，及供應商的工作效率和施工安全。

The subcontractors are carefully selected, with strong emphasis on the quality of their work, suppliers' effectiveness, and also safety issues.

本集團已獲取ISO9001:2000品質認證，所以，所有的工程均符合公司所製訂的質量守則，監察施工質素。

Our Group has the certification of ISO9001:2000, therefore, all works will have carried out in accordance with specifications and also Quality Manual to maintain our standard of works quality.



Metal Ceiling

▲ MEI FOO STATION, MTR  
地下鐵·美孚站

## 環境保護 Environmental Issues

本公司採取各項措施防止噪音和塵埃的污染，或由工程所引致的廢物和垃圾，並會適時清理。

The company has taken every step to avoid noise and dust pollution. Rubbish and waste materials from project work are disposed of as soon as possible.

## 安全方面 Safety Issues

本公司已訂立安全政策和指引予各員工和工友，並確保他們能遵守和執行。

The company has formulated safety policies and guidelines for all of our staff and workers to follow during project work.

本公司亦經常委派管工出席各項安全訓練課程，讓管工指導各工人採取適當的安全施工方法，避免意外發生。

The company regularly sends its foremen to attend safety courses. The foremen will ensure the workers adopt safe ways of using tools in order to avoid accidents.

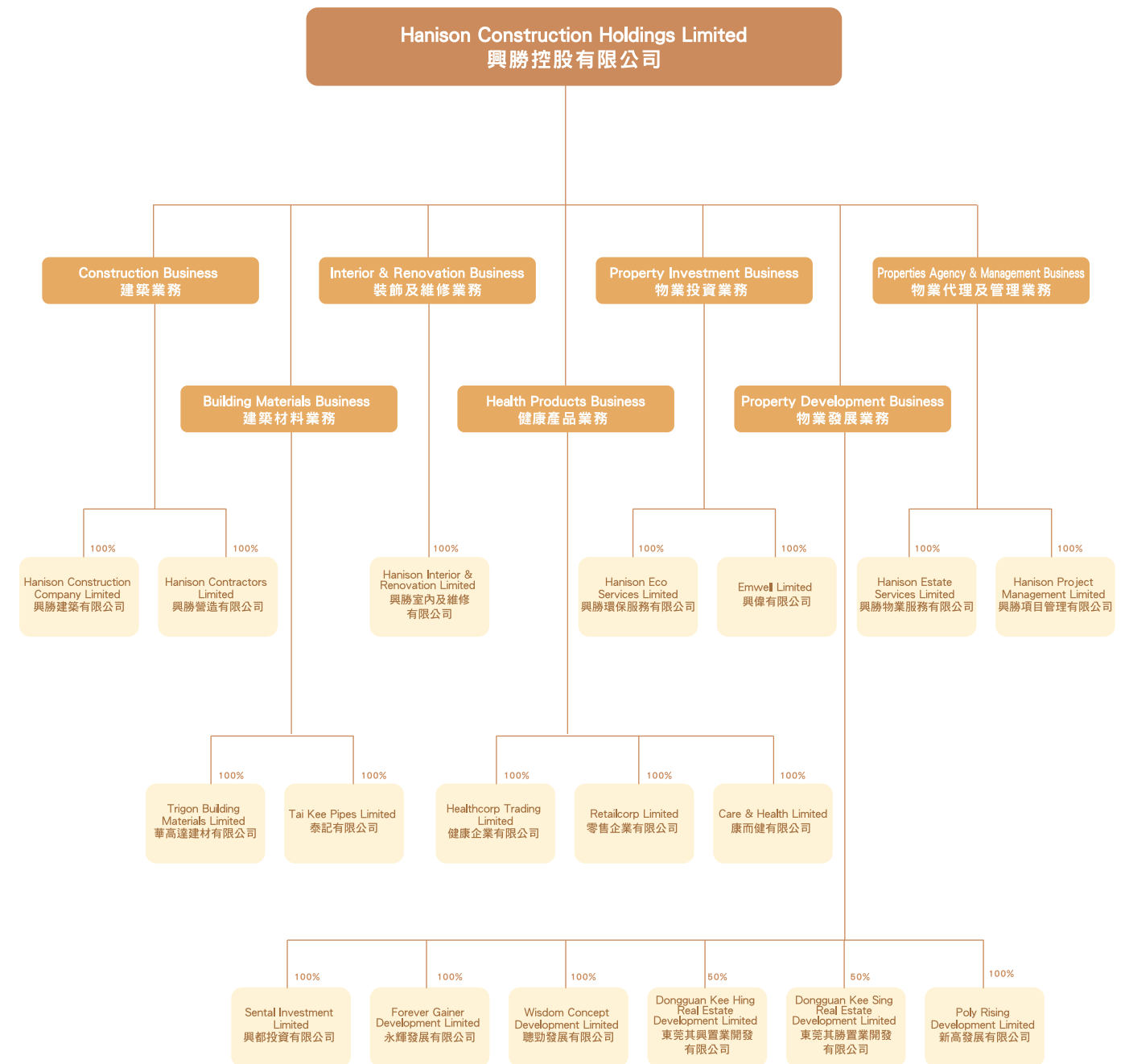
本公司所安排的安全入職培訓，提醒各工友注意風險評估報告內所提到工地內所潛藏的危險工作，讓他們提高安全意識，以防止意外發生。

Regular safety induction meetings will be held on site to ensure all workers to aware of work safe and prevent any accidents by identification of those risks.



# Corporate Structure 集團架構

## 集團架構 Corporate Structure

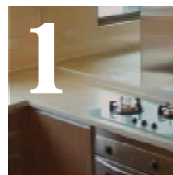






## 產品精選

Product Highlights

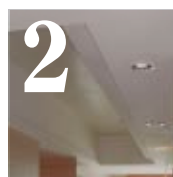


### 廚櫃及浴室櫃

#### Kitchen and Bathroom Cabinet

憑藉多年成功經驗，本公司已取得廣大發展商、建築師，以及承建商認同及信賴。本公司產品非常多樣化，由傳統木紋為基調之式樣，到近年新興之高光漆面廚櫃與浴櫃；抑或大型樓盤常見的設計，以至歐洲進口的高檔品牌，其中必定能滿足客戶最嚴格的要求。

With years of success in supplying quality kitchen cabinet, our company gains wide acceptance by developers, architects and main contractors. Ranging from traditional wood grain pattern, to stylish modern high gloss colored panel; from cabinet commonly found in large scale development, to European cabinet for upper-end premises, our product suits even the most stringent requirement from our clients.



### 假天花、金屬幕牆板及百葉

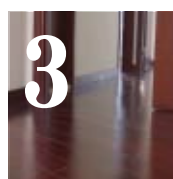
#### False Ceilings, Metal Cladding and Louvre

本公司擁有豐富經驗為客戶提供及安裝不同類型的假天花系統，包括金屬天花、隔音天花、玻璃棉天花、礦棉天花以及石膏板天花。在替客戶提供安裝服務的同時，對較為複雜之設計如金屬幕牆及百葉，我們亦會提供有關的技術建議。

Our company had extensive experience in providing top quality false ceiling system including Metal Ceiling, Acoustic Ceiling, Glasswool Ceiling, Rockwool Ceiling, Gypsum Board Ceiling. Besides providing installation services, we also provide technical advice for those sophisticated design such as Metal Cladding and Louvre system.

本公司參予過的工程簡單至安裝一般的寫字樓用天花片，或複雜至為客戶訂做特別剪裁之室內泳池天花，及樓宇外牆使用之防風金屬百葉。

Our works range from simple ceiling tiles for common office, to complicated design-and-built non-standing size ceiling for in-door swimming pool and wind proof metal louvre system for external wall.

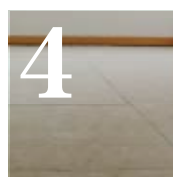


### 木地板及複合地板

#### Timber Flooring and Engineering Flooring

本公司擁有對木材豐富的認識，充分掌握不同地板的顏色、紋理及其產品特性，以及累積多年安裝經驗，一直以來本公司之長條實木地板、傳統柚木丁方地板，抑或複合地板，無論在特色別墅還是大型屋苑項目中都能深得客戶愛戴。

Our company had substantial knowledge in timber, and deep understanding about the color, pattern and properties of different flooring. Our vast experience in long strip timber flooring, tradition teak parquet or engineering flooring for town house, mid-rise tower or large-scale residential estate gain us wide support from clients.



### 百利板

#### Polyboard

本公司多年來不斷引入高質量的環保產品，亦於1998年成功為本地市場引入百利板。一直以來，百利板已於多過大型地產項目中使用。

With continuous effort in sourcing quality environmental friendly product to local market, our company successfully introduced Polyboard to local developers in 1998. During this period, Polyboard are extensively used in many large scale development.

百利板為無味，無毒性之板材，各類型釘子或螺栓亦可牢固其中，使用上百利板亦與一般夾板無異。百利板為200%之環保產品，百利板由工農業廢料如塑膠、木屑、紙張等做成，因此亦可循環再做及使用，達至無污減廢之效。

Polyboard is an odorless, not-toxic, recyclable eco-friendly panel material with excellent nail-holding ability and is easy to use like wood. Polyboard is a 200% Environmental Product made from industrial and commercial waste such as plastic, sawdust, paper, etc and can be constantly reused and recycled — no waste, no pollution.



廚櫃及浴室櫃  
Kitchen and Bathroom Cabinet



項目 / PROJECT: **紅磡灣海韻軒**  
Harbourview Horizon at Hung Hom Bay

年份 / YEAR: **2006**

設計特色 / FEATURES: 4mm蝕砂橫紋啡鏡玻璃  
4mm etched Brown Tinted Glass Door

開放式廚櫃  
Open style kitchen

單面反光原子鏡，特別顯示廚櫃空間感覺  
One-way mirror to enhance a spacious feeling

橡木顏色膠板顯出柔和溫暖感覺  
Oak pattern laminate gives a feeling of peace and tranquility





## 廚櫃及浴室櫃 Kitchen and Bathroom Cabinet



項目 / PROJECT: **石崗四季雅苑一、二期**  
Seasons Villas Phase 1 & 2 at Shek Kong

年份 / YEAR: **2003** (一期 Phase 1) 、 **2006** (二期, Phase 2)

設計特色 / FEATURES: 淺橡木色門板配合鋁抽手門設計，特顯時尚感覺  
Elegant aluminium recess handle and light oak door panel gives contemporary looks

吸塑板能增加廚房明亮華麗的空間感  
High gloss PVC panel creates a bright and elegant spaces of cooking

充份利用空間，塑造寬闊空間感，適合小家庭採用  
Design and arrangement are in good balance makes it a pleasant centre of family





## 廚櫃及浴室櫃 Kitchen and Bathroom Cabinet



項目 / PROJECT: **清水灣柏濤灣**  
The Portofino at Clear Water Bay

年份 / YEAR: **2006**

設計特色 / FEATURES: 採用德國進口膠面的廚櫃門板既易清潔又耐磨防撞且防火防水  
German imported laminated door panel is easy to clean,  
combined with perfect scratch-, water- and fire-resistance

開放式抽油煙機  
Open-style cooking hood

焗爐四邊設有隔熱的不銹鋼封柱，使用時不會影響兩旁廚櫃  
Stainless steel frame around the oven prevent excessive heat  
affective kitchen cabinet nearby

寬闊空間，V型手抽  
Modern style V shape handle

立體木紋設計門板、四面直邊修口更顯時代感  
3D wood grains design door panel, with sharp edge,  
clear lines, defined shapes brings modern ambience





## 廚櫃及浴室櫃 Kitchen and Bathroom Cabinet



項目 / PROJECT: **青衣藍澄灣**  
Rambler Crest at Tsing Yi

年份 / YEAR: **2004**

設計特色 / FEATURES:

- 頂揭門及油壓撐  
Up lift door comes with special springs fittings make heavy fronts panel become easily open
- 三層不鏽鋼拉架，增加儲物空間  
3 level stainless steel rack increases storage space
- 以高溫真空吸塑技術，製造出既易清潔又耐用的廚櫃門板  
High temperature treated PVC door panel make kitchen more easily to clean and durable
- 特色鏡面趟門，特顯時尚感覺  
Mirror faced sliding door adds modern ambience to your house





## 假天花、金屬幕牆板及百葉 False Ceiling, Cladding & Louvres



項目 / PROJECT: **灣仔警察總部**  
Police Headquarters at Wanchai

年份 / YEAR: **2004**

設計特色 / FEATURES: 燈片網格天花系統 — 開放式的天花設計  
Open Grid Ceiling — open space design

天花組合主要由明架式的T型主龍骨及副龍骨承托鋁質天花  
Each aluminum panel is laid on the visible T-shape main & cross runner individually

以T型龍骨吊碼懸掛整幅天花  
Entire ceiling is suspended by the T-runner clamp





假天花、金屬幕牆板及百葉  
False Ceiling, Cladding & Louvres



項目 / PROJECT: **數碼港貝沙灣**  
Bel-Air on the Peak at Cyberport

年份 / YEAR: **2006**

產品 / PRODUCT: 勾疊天花系統 — 密閉式的天花設計並配以鵝蛋型設計  
Hook-on ceiling system — a closed space design with oval shape pattern

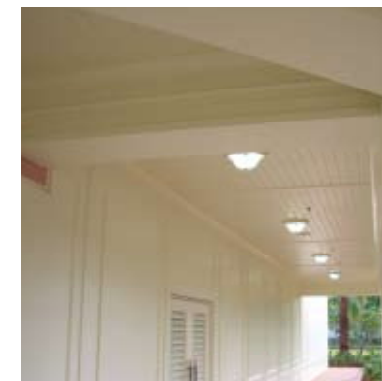
鋁質天花平整而穩固，採用勾掛式Z型龍骨，組成一幅隱閉式龍骨的平面天花  
The aluminum panel is hooked on the Z-shape runner tightly to hide the suspension parts at the back of the ceiling

如在室外使用，可裝置防風碼，提升其防風能力  
Installing security clip can increase the windproof ability of the system





假天花、金屬幕牆板及百葉  
False Ceiling, Cladding & Louvres



項目 / PROJECT: **香港迪士尼樂園酒店**  
Hong Kong Disneyland Hotel

年份 / YEAR: **2005**

設計特色 / FEATURES: 天花系統以防水夾板為主要材料，配以V型凹槽  
Marine Plywood grooved with v-shaped recess

整個系統以鋼骨架支撐以加強防風能力  
The ceiling is reinforced with steel frame to enhance its windproof ability

再配以油漆面呼應樂園主題  
Painting to match the overall theme of the park





假天花、金屬幕牆板及百葉  
False Ceiling, Cladding & Louvres



項目 / PROJECT: **地下鐵路美孚站**  
MTR Mei Foo Station

年份 / YEAR: **2002**

設計特色 / FEATURES: 度身設計的鋁質天花，以特別式樣的組件提升整個獨特設計  
Tailor made aluminum ceiling with special modular to highlight the pattern of the design





假天花、金屬幕牆板及百葉  
False Ceiling, Cladding & Louvres



項目 / PROJECT: **東涌藍天海岸會所**  
Clubhouse at Coastal Skyline, Tung Chung

年份 / YEAR: **2003**

設計特色 / FEATURES: 度身設計的波浪型鋁質天花，乖巧地把其他機電裝置設施及維修通道隱藏起來  
Tailor made curved aluminum ceiling, with sophisticated design to conceal all the services and catwalk





## 假天花、金屬幕牆板及百葉 False Ceiling, Cladding & Louvres



項目 / PROJECT: **清水灣道8號**  
**No. 8 Clear Water Bay Road**

年份 / YEAR: **2005**

設計特色 / FEATURES: 鋁質百葉置於大廈外牆  
Aluminum louvres installed at the external wall of the building

其設計用以隱藏有礙觀瞻的機電裝置設施及機械  
It helps to hide all unsightly services and machines

整個系統以燒焊方式固定於鋼骨架上以確保其防風能力  
The whole system is welded to the steel framework to maintain its windproof ability





## 實木地板 Solid Wood Flooring

### 特點 Characteristics:

傳統  
Traditional

自然外觀，比較大眾化，一般而言用家會較熟悉  
Natural outlook, more popular and familiar to end-user

可容許較多次的車磨  
Could be sanded more times than engineering flooring

容易隨環境氣候膨脹收縮  
Less dimensional stable

於大型建築工程而言，某些珍貴木種供應較少  
Limited supplies for valuable species, especially for large size project

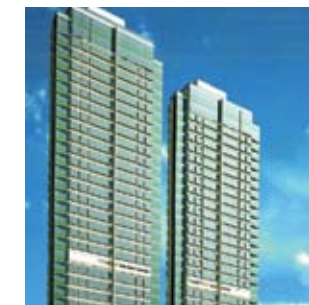
四邊一般以倒角為主  
Beveled edge usually

價格較複合地板高  
Comparatively precious than engineering flooring

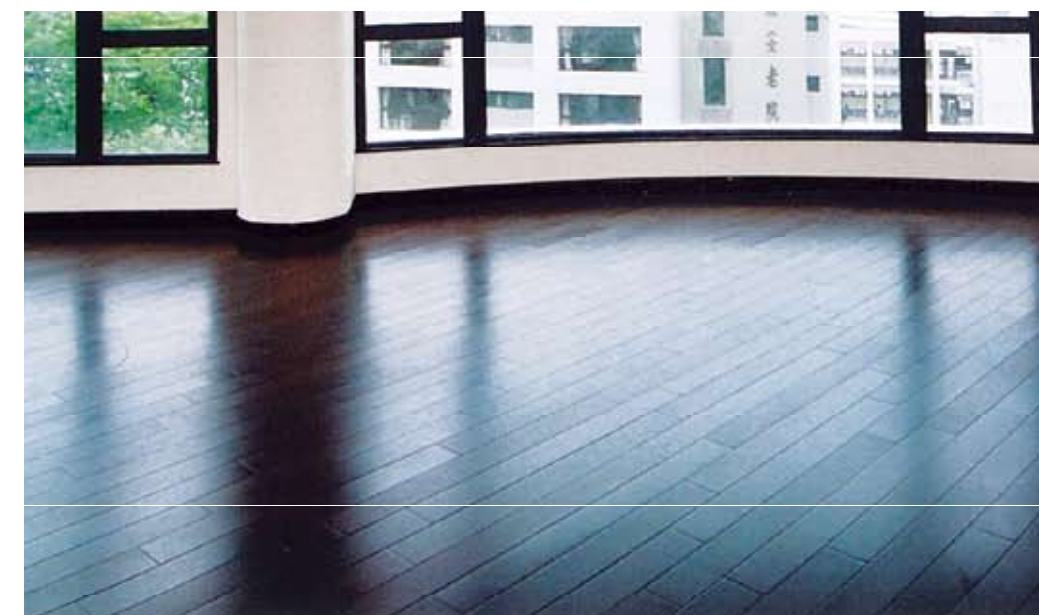
安裝時需預留較多的伸縮縫  
More expansion gap required



項目 / PROJECT: **北角海天峰**  
Skyhorizon at North Point  
年份 / YEAR: **2004**  
產品 / PRODUCT: 沙比利長條實木地板  
Sapele Solid Wood Flooring



項目 / PROJECT: **灣仔肇輝臺**  
No 8 Siu Fai Terrace at Wanchai  
年份 / YEAR: **2004**  
產品 / PRODUCT: 紫檀長條實木地板  
Ipe Solid Wood Flooring





# 複合地板 Engineering Flooring

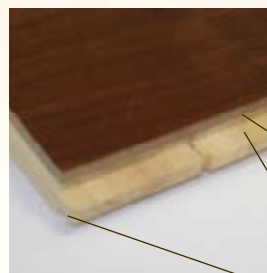
## 類別 Categories:

### 1. 多層複合 Multi-layer



- 耐磨油漆層  
Durable Lacquer Layer
- 天然珍貴原實木表層  
Natural Valuable Solid Wood Layer
- 防翹曲夾板層  
Plywood Layer to Prevent Cupping
- 防彎曲實木底板  
Balance Layer

### 2. 三層複合 3-layer



- 耐磨油漆層  
Durable Lacquer Layer
- 天然珍貴原實木表層  
Natural Valuable Solid Wood Layer
- 防翹曲橫置基材  
Horizontal Laid Middle Layer to Prevent Cupping
- 防彎曲實木底板  
Balance Layer

## 特點 Characteristics :

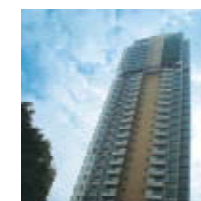
- Usually available single strip pattern  
一般而言，只供應單拼面板
- Usually beveled edge  
切面通常以倒角為主
- Outlook close to traditional solid wood flooring  
外觀很接近傳統實木地板
- Base material is similar to plywood structure  
基材板構造與夾板相近

## 特點 Characteristics :

- 2 to 3 strip pattern allowed  
可供雙拼或三拼面板
- Wider plank but narrow individual strip  
地板塊比較寬闊，但其中之拼板較窄
- Square edge usually  
切面通常以方角為主
- Requirement on flatness of subflooring is stringent  
對地台的平整度要求較高
- Laying pattern limited due to layer plank size  
因板面較大之緣故，地板的鋪砌方法有限制



**東涌水藍天**  
項目 / PROJECT: La Bleu at Tung Chung  
年份 / YEAR: 2005  
產品 / PRODUCT: 紫檀多層長條複合地板  
Ipe Multi-layer Engineering Flooring



**高街一號**  
項目 / PROJECT: High Street  
年份 / YEAR: 2006  
產品 / PRODUCT: 橡木(白油面)三層複合長條地板  
Oak (White-oiled) 3-layer Engineering Flooring





# 百利板 Polyboard

**Polyboard** is odorless, non-toxic and easy to use like wood, having excellent nail-holding ability. Polyboard can be custom-cut to any size to suit your specific needs, thus enabling easy application.

百利板無味，無毒性，安全可靠。它易用如木，而且吸釘堅實。百利板可以度身訂造任何所需特別尺寸，且施工方便。

### Nice property of Polyboard:

Waterproof	Fungi-repellent
Weather-proof	UV-resistant
Decay-proof	Odourless, non-toxic
Damp-proof	Easy to use like wood
Sound insulation	Tougher than wood
Corrosion-resistant	Unlimited applications
Chemical-resistant	Cost-saving, reusable
Termite repellent	Everlasting, maintenance free
Eliminate plastic waste in earth	

### 百利板特點

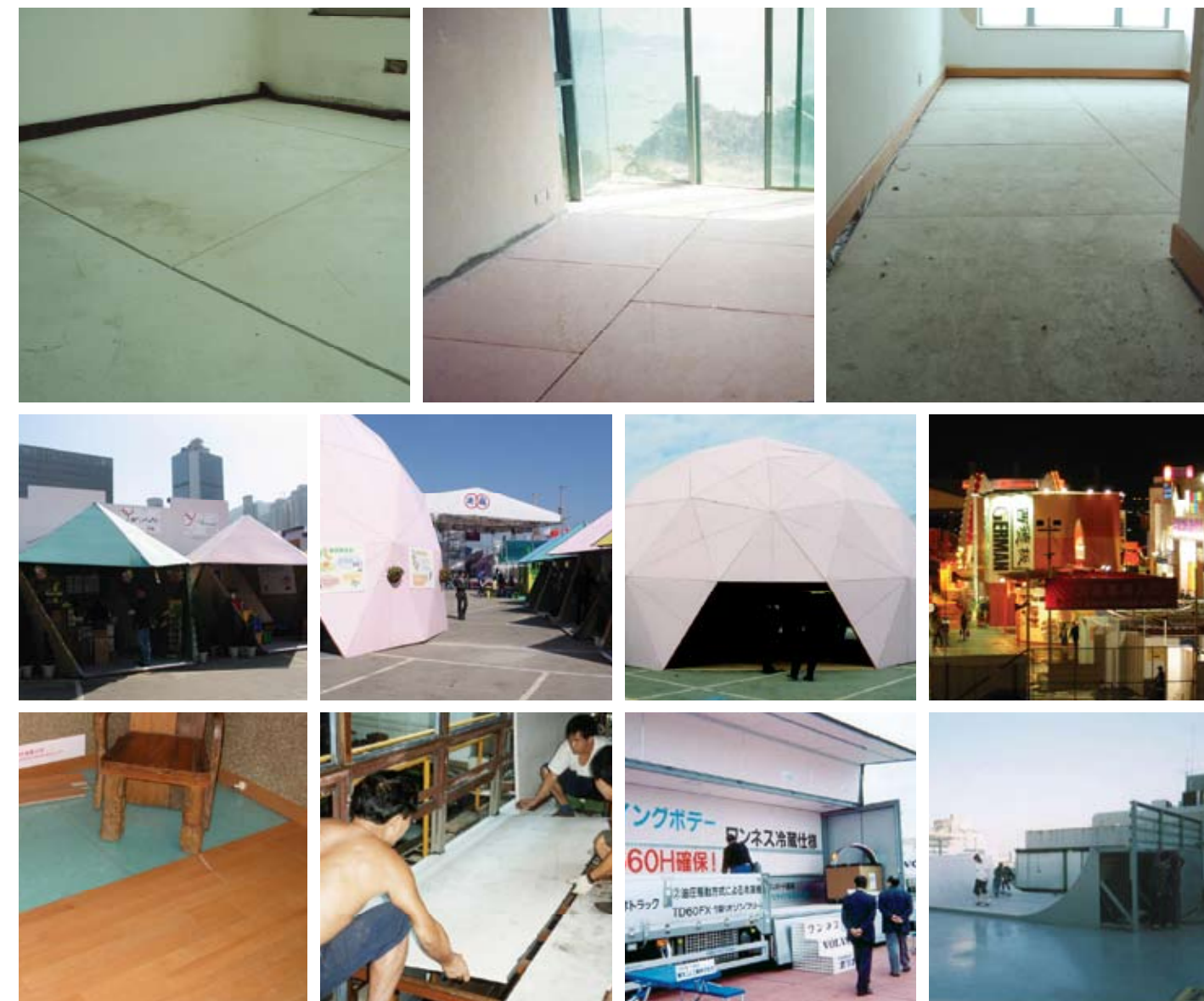
防水	防霉
耐氣候	防紫外光
防腐	無味無毒
防潮	易用如木
隔音	比木堅韌
防腐蝕	用途廣泛
防化學品	可再用
防白蟻	可再生
	減少塑膠污染

### APPLICATION OF POLYBOARD INCLUDES:

- Building Construction** - in subflooring for timber flooring, partitions, external fencing etc.  
Polyboard is 12 times stronger than wood, indestructible to withstand any heavy impact or dropping debris.
- Transportation** - in decks, walls, scruff-liners for trailers, trucks, buses etc.  
Polyboard is flexible and tough to withstand hard knocks and the poundings of forklifts.
- Indoor Sports Facilities** - in indoor sports podium flooring.  
Polyboard never rots, grows mould or cracks; it is maintenance free and thus saves cost.
- Open-air Facilities** - in benches, fences, booths, guardhouses etc.
- Outdoor advertising** - in billboards, signs, etc. Polyboard is weatherproof.
- Marine Applications** - in ship decks, piers, underwater structure.

### 百利板適用範圍

- 建築** - 木地板底板、間隔、柵欄圍牆等。百利板比夾板強韌十二倍，抗壓力強。
- 交通運輸** - 船艇甲板、碼頭海面水下設備，集裝箱地台及護壁，不會刮爛，不怕撞擊。
- 室內運動場所** - 可用作室內運動館的地板底板。百利板防腐、抗菌、不易開裂，因此減省維修費用。
- 露天設施** - 露天座椅、柵欄圍牆、亭台、展覽攤位、守衛亭等皆適用。



1	2	3
4	2	3
5	6	7

- 1-3 Flooring of High Street, La Serene & TKO
- 4-6 2001年工展會攤位上蓋
- 7 2001年工展會地板底板
- 8 2001年工展會
- 9 Polyboard
- 10 Volvo Truck Show
- 11 Mitsui skateramp





**興勝創建控股有限公司**

**HANISON CONSTRUCTION HOLDINGS LIMITED**

A member of Hanison Construction Holdings Limited

**興勝建築有限公司**

**HANISON CONSTRUCTION COMPANY LIMITED**

**興勝營造有限公司**

**HANISON CONTRACTORS LIMITED**

**興勝室內及維修有限公司**

**HANISON INTERIOR & RENOVATION LIMITED**

**華高達建材有限公司**

**TRIGON BUILDING MATERIALS LIMITED**

香港沙田源順圍5-7號沙田工業中心B座4樓1室  
Unit 1, 4/F., Blk B, Shatin Industrial Centre,  
5-7 Yuen Shun Circuit, Shatin, N.T. Hong Kong

電話 / Tel : (852) 2414 3889

傳真 / Fax : (852) 2415 2080 / 2498 9045

電郵 / Email : [general@hanison.com](mailto:general@hanison.com)

網址 / Web-site : [www.hanison.com.hk](http://www.hanison.com.hk)